

SUPPLEMENT TO THE AGENDA FOR

General Overview & Scrutiny Committee

Monday 11 February 2013

10.00 am

The Council Chamber, Brockington, 35 Hafod Road, Hereford

8. LOCAL TRANSPORT PLAN 2013/14 TO 2014/15

Pages

1 - 10

General Overview & Scrutiny Committee 11 February 2013

Agenda Item 6 – Questions from the Public

To note questions received from the public and items to which they relate.

This question relates to Agenda item 8 – Local Transport Plan and therefore the Chairman will bring it to the attention of the Committee under that item.

The written response by the Head of Transportation and Access is in **bold** typeface.

Question from Mrs Wegg-Prosser

Re Agenda Item # 8 : Local Transport Plan 2013/14 – 2014/15 Although this report on the interim Local Transport Plan makes reference to 'refreshed transport policies' (#6, bullet point 1), the 'refreshed transport model', which should be in use now, has been delayed. There does not appear to be any reference to the existence on the Council's website of the 'feedback' to the LTP 2013-15 Consultation although this is referred to in the report as being 'positive' (#10.2) This Scrutiny Committee has been assured that consultations will be based on up-to-date and independently verified evidence.

Could the Chairman please indicate how he continues to remain confident of this assurance when

- (1) The refreshed transport model is not available,
The Local Transport Plan 2013/14 to 2014/15 is not seeking to commit the Council to any scheme for which an updated model is required.
The LTP focuses on the next two years activity. It identifies the on going linkage with the Local Development Framework and the need to develop long term transport strategy in that context.
- (2) The report on feedback to the autumn 2012 LTP consultation is not available,
The Head of Transportation and Access **offers his apologies for not having arranged in advance for the Consultation Report to be made available on the website. It should now be accessible on the consultation link under the local transport plan and it should have been listed as a background paper to the report.**
- (3) The LTP Paper for this meeting refers (#16.1) to a 'background' paper which does not appear to have been made available, and the final paragraph indicates (#18.1) that there are no background papers anyway.
Please see response to Q2.

Clarification on these points would be much appreciated. I hope to attend the meeting.



Key Outcomes of Consultation

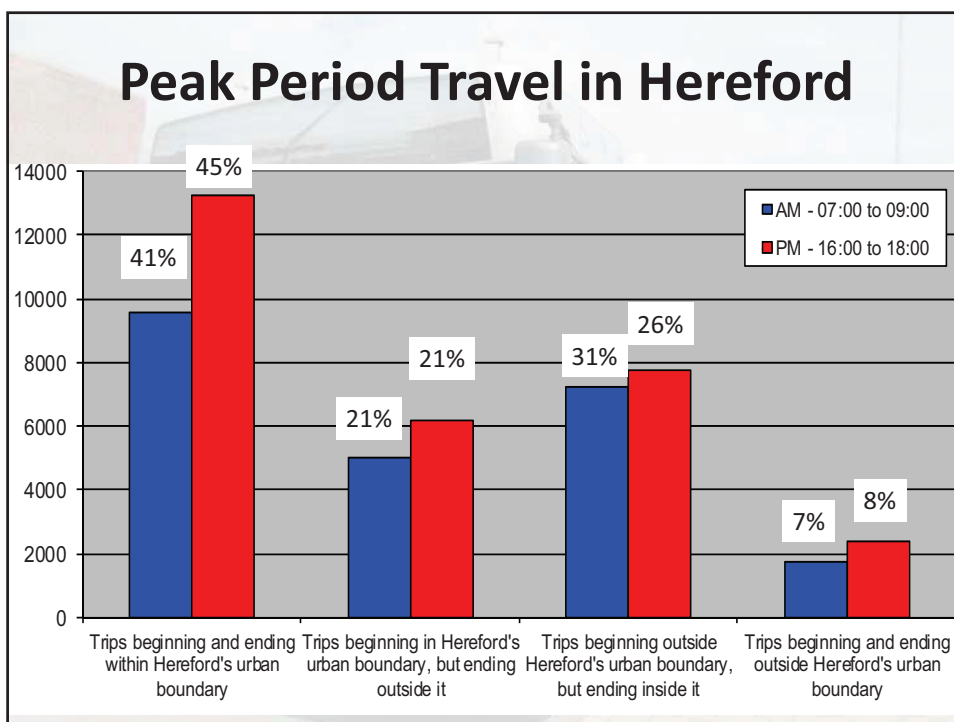
- Retaining buses seen as single most important issue
- Support for:
 - Area based strategies for Hereford and Rural Areas/Market Towns
 - car parking strategy for Hereford
 - Core bus network
 - Approach to maintenance
- Desire for simplified document with less technical jargon

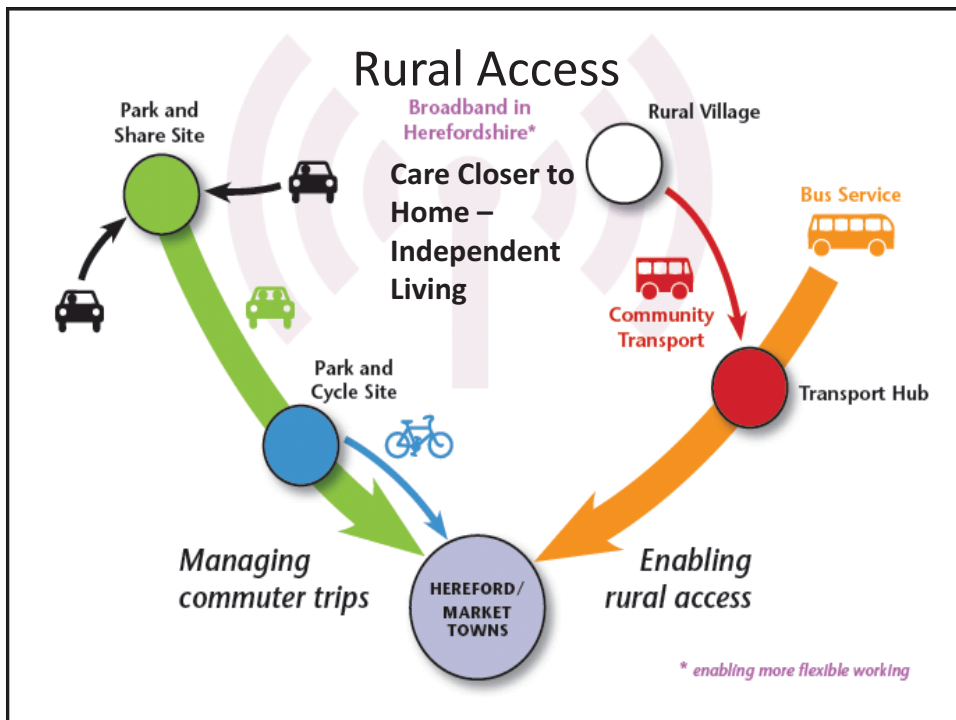
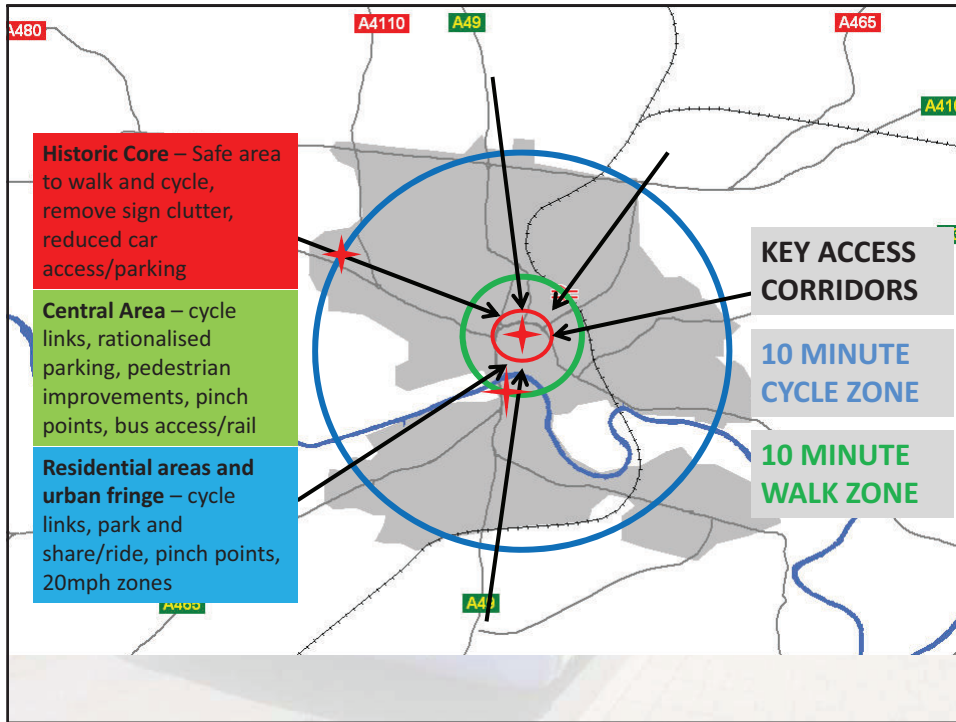
Overview for LTP

- Covers 2013/14 to 2014/15
- Focus on delivery – what we are going to do
- Consolidating various delivery programmes – LTP, capital programme, LSTF, development led
- Reflecting proposals emerging from R&B reviews
- Eye on longer term strategy and on going coordination with LDF
- Linkages with Local Transport Body and Major Scheme Funding process

Strategy

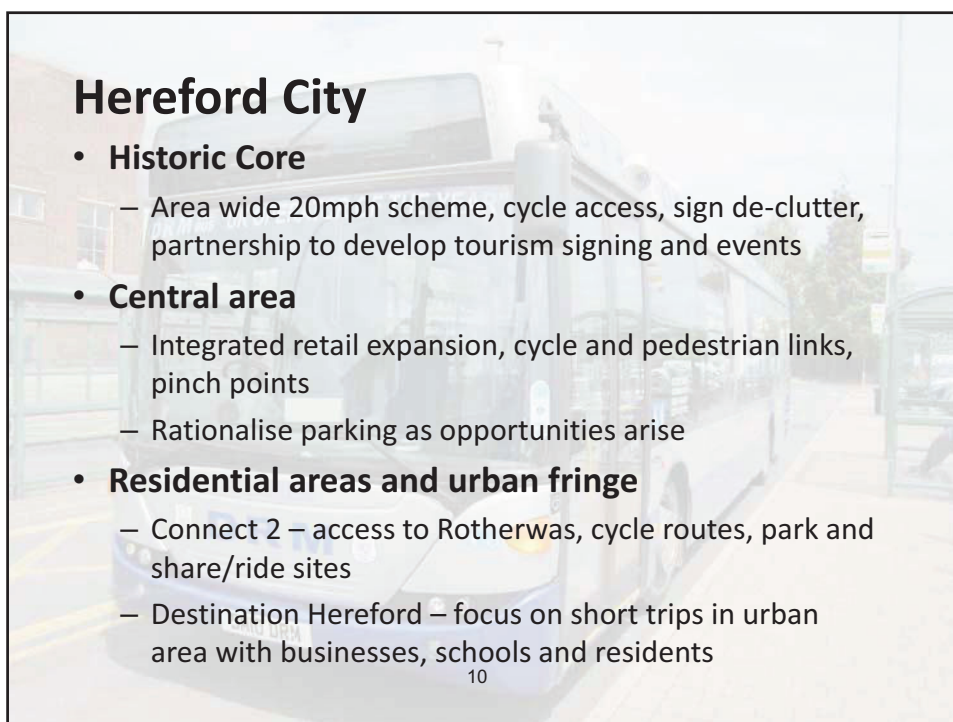
- **Core Purpose:**
 - To deliver a cleaner, healthier more prosperous county
(Create and maintain a successful economy)
 - To maintain connectivity for all and to reduce social isolation of the elderly and those without access to a car
(Enable residents to be independent and lead fulfilling lives)
- **Hereford City Vision**
- **Maintaining Rural Access**
- **Delivery programmes for 2013/14 to 2014/15**







Delivery 2013/14 to 2014/15



Hereford City

- **Historic Core**
 - Area wide 20mph scheme, cycle access, sign de-clutter, partnership to develop tourism signing and events
- **Central area**
 - Integrated retail expansion, cycle and pedestrian links, pinch points
 - Rationalise parking as opportunities arise
- **Residential areas and urban fringe**
 - Connect 2 – access to Rotherwas, cycle routes, park and share/ride sites
 - Destination Hereford – focus on short trips in urban area with businesses, schools and residents

10

Rural Areas and Market Towns

- **Passenger Transport**
 - Redesigning services around the core network to improve VfM and maintain access
 - Further development of park and share
- **Maintaining the network and keeping it safe**
 - Asset management approach to achieve VfM
 - Emphasis on capital investment to move away from reactive maintenance
 - Continue targeted programme of safety improvements and education

11

How will this help residents?

- Older people – retaining bus services and access in rural areas
- Workers and businesses – focus on peak hour travel to ease congestion in Hereford
- Parents and school children – support for reducing car use on the school run
- Rural residents – maintaining the highway network for access and keeping it safe
- Hereford residents – focus on changing behaviour for short trips and healthier modes of travel

12

Next Steps

- Cabinet – 21 February
- Council – 8 March
- On going linkage with Core Strategy 2013/14



